

*Prospectus*  
PROSPECTUS 2022



**SATS**

Bible-based Christ-centred Spirit-led



# ENDORSEMENTS

Thank you so much to SATS, my excellent lecturers and supervisors. It has been an absolute privilege studying through SATS and I have learnt so much more than just the study material given to me. It has been an incredible journey and I am left much richer because of it.

**Leighann Fiford**

---

Doing a Masters in Greek at SATS instilled in me an awe for God's word, honed my translation and exegesis skills, made me a better translator of the Greek New Testament, and gave me much-needed experience and confidence in teaching Greek to my students. What an unequalled treasure!

**Joseph Mahlaola**

---

I would like to express my sincere gratitude and appreciation for your continuous support, feedback and advice during my completion of this course. I value your input and highly regard your closing comments with respect to my final assignment.

**Charmaine Erasmus**

---

Studying with SATS has been a wonderful experience for me. The teaching mode you use for distance learning was fantastic for me in doing my research and I appreciated the input from my research supervisor!

**Mahmoudoune Mohamadou N'diyae**

---

I actually heard about SATS through my brother, who was at the time enrolled in the Master's program. I chose SATS because it was distance, Evangelical and very affordable.

**Derek Loseth, USA**

---

I guess to summarize, the things that stood out to me about SATS were: rigorous, inexpensive, nondenominational, online DTh offering, with many diverse students, many whom are really in full-time ministry and serious about the Lord. And basically found it by doing searches along those lines, seeing its name pop up in listings of inexpensive seminars, and reading about it on various online forums.

**Eli Taft, USA**

---

I have been studying with SATS for three years now and it has been the best, most challenging and enriching process. So grateful to SATS and everyone involved for the incredible work you all put in so that we can be enlarged and equipped. I will be forever grateful.

**Anusha Gowriah**

---

This has been a wonderful experience. I will miss the sessions with the buddies, it was fun but also an extremely powerful learning experience. Their feedback empowered me to do better. I am very grateful for the participation.

**Dedre Olivier**





*Prospectus*  
PROSPECTUS 2022



**SATS**

Bible-based. Christ-centred. Spirit-led.





# CONTENTS

Message from the Principal . . . . .	.3
Mission . . . . .	.4
Foundational Pillars . . . . .	.4
Statement of Faith . . . . .	.5
Philosophy . . . . .	.5
Board of Directors . . . . .	.5
Accreditation and Registration . . . . .	.6
Partnering with SATS . . . . .	.7
Advantages of Studying At SATS . . . . .	.8
MySats . . . . .	.9
Operational Teams . . . . .	10
Academic Teams . . . . .	11
Library . . . . .	16
Enrolment Procedure . . . . .	16
Pricing . . . . .	17
Frequently Asked Questions . . . . .	18
Graduation . . . . .	20
Programme Information. . . . .	21
How Do Our Programmes Work? . . . . .	22
Doctor of Philosophy In Theology. . . . .	24
Master of Theology . . . . .	26
Master of Divinity . . . . .	28
Bachelor of Theology (Honours) . . . . .	30
Bachelor of Theology (Honours) with a Counselling Focus . . . . .	32
Bachelor of Theology . . . . .	34
Bachelor of Theology with a Counselling Focus. . . . .	38
Higher Certificate in Christian Life . . . . .	40
Higher Certificate in Christian Counselling . . . . .	42
Stand Alone Courses . . . . .	45
Course Descriptions . . . . .	46
Time Table . . . . .	60





## WELCOME



### Message from the Principal 2022

*We are hard pressed on every side, but not crushed; perplexed, but not in despair; persecuted, but not abandoned; struck down, but not destroyed. (2 Cor 4:8–9, NIV)*

These beautiful words voice how many of our staff and students are feeling after almost two years under pandemic conditions. Although Paul had different hardships in mind when he wrote these words, we can identify with his feeling of being “hard pressed,” “perplexed,” and “struck down.” The blizzard has turned into an ice age. Pastors have adapted to leading churches that cannot meet and interact as usual. We have learned to cope with social isolation. We have lost loved ones, lost income, lost opportunities, and more.

But we can also say with Paul that we are “not crushed,” “not in despair,” “not abandoned,” and “not destroyed.” As we look back, God has been with us in the storm. As the SATS team, we stand amazed at the commitment and sacrifices that our students make to study the Word of God, to equip themselves for effective ministry. They face pressures and challenges on all sides, but they value truth enough to keep investing in their training. They are workmen who do their best to present themselves approved to God, rightly handling the word of truth (2 Tim 2:15).

If Jesus is Lord and the Bible is true, then there is no higher calling and no more important task than knowing, understanding, and applying God’s Word. Therefore, *“let us not become weary in doing good, for at the proper time we will reap a harvest if we do not give up” (Gal 6:9).*

**Dr Kevin Smith**





## MISSION

*Our mission is to provide Biblical, Christocentric online education and training to Christians, and leaders in particular, within their local church environment, to equip them to be Holy Spirit empowered members of God's household.*

Our passion is to prepare Christ-centred leaders for every church. In addition to our three foundational pillars (Bible-based, Christ-centred, Spirit-led), we hold these core convictions about the nature of theology:

1. Good theology is *God-glorifying*: The goal of all theology and all ministry is to bring glory to God.
2. Good theology is *mission-minded*: All good theology is inherently missional, being in service of the mission of God. We believe that theology divorced of its missional ethos is unfaithful to the call of God.
3. Good theology is *church-based*: Theology must always be anchored in the church and in service of the church.

We carry out our mission through online education because of a heartfelt belief in church-based training as the preferred approach. We believe in 'training for ministry in ministry'; we are committed to training God's servants in the context of their ministry.



## FOUNDATIONAL PILLARS

SATS stands on a triune doctrinal foundation:

- **The unique authority of the Word of God the Father.** We believe that the Bible is the only written revelation of and from God and that it is therefore all we need for faith and life.
- **The lordship and centrality of Jesus Christ.** We believe that Jesus Christ is God the Son and the full revelation of the Godhead to humanity. He is the head of the church and the Lord of our lives. As a result, we are to base our doctrine and practice on what he said and did.
- **The ministry of the Holy Spirit.** We believe that we are to trust and obey God the Holy Spirit and that we are to embrace all that the Scriptures reveal of him and his ministry.

These foundational principles are summed up in our by-line: **Bible-based, Christ-centred, Spirit-led.**





## STATEMENT OF FAITH

We define ourselves as a Bible-based, Christ-centred, Spirit-led seminary. We are home to a broad cross-section of Christians who believe that the Bible is the inspired, infallible Word of the Triune God, that Jesus Christ is fully God and fully man, that through his death and resurrection Jesus Christ became the only Saviour, that people are saved by grace alone through faith alone in Jesus Christ alone, that the Holy Spirit is the third Person of the Trinity who actively ministers to and through God's people, that the Lord founded and loves the church, and that Jesus Christ is coming again to judge all people.

SATS is a home for Christians from a broad diversity of churches and denominations who are comfortable with our high view of the Bible and of the gospel. We make no attempt to take a firm stance on most issues that divide evangelical believers. You will feel at home regardless of your beliefs about baptism, the Lord's Supper, women in ministry, Calvinism versus Arminianism, the age of the Earth, the end times, or any number of other debates amongst evangelical Christians.

You do not need to agree with our faith commitments to study through SATS. We teach theology from an evangelical perspective, but anyone is welcome to study with us.

You can read our Statement of Faith on our website.  
<https://sats.ac.za/about/statement-faith/>



## PHILOSOPHY

We see our role as providing *lifelong learning*<sup>1</sup> opportunities in theological and practical church-related studies of a high academic standard. We believe that the responsibility for the learning process should be placed upon the student within the context of the local church. We see our role as a provider of reasonably priced, academically sound, Bible-based, Christ-centred, Spirit-led online training.



## BOARD OF DIRECTORS

SATS is under the governing oversight of a Board of Directors that meets five times each year. At present, the members of the Board include Eleanor Chamberlain, Stuart Tapson, Adam Spence, Doug Timberlake, Henning du Plessis, Kehinde Ogunrombi, Xavier Marot and Kevin Smith. Under the leadership of the Board, the Seminary has successfully maintained its policy of being debt free since its inception.

<sup>1</sup> – Lifelong learning describes the philosophy that in this day and age we all need to be in a continuing process of updating our skills and knowledge.





## ACCREDITATION AND REGISTRATION

All our programmes are accredited by the Council on Higher Education (CHE), the Education and Training Quality Assurer (ETQA) of the South African Qualifications Authority (SAQA), and are registered by the Department of Higher Education and Training (DHET, registration number 2001/HE08/005). The registered programmes are:

- Doctor of Philosophy in Theology
- Master of Theology
- Master of Divinity
- Bachelor of Theology Honours
- Bachelor of Theology
- Higher Certificate in Christian Life
- Higher Certificate in Christian Counselling

SATS is registered as a Section 21 company (reg. no. 2002/005184/08), a PBO (18/11/13/2403), and an NPO (033-343-NPO).

We are also a founder member of the National Association of Distance Education Organisations in South Africa (NADEOSA) and we are a member of the Association of Private Providers of Education, Training and Development (APPETD), the South African Institute for Distance Education (SAIDE), the International Council for Evangelical Theological Education (ICETE), the International Council for Higher Education (ICHE), the CHEA International Quality Group (CIQG) and the World Evangelical Theological Institute Association (WETIA).

Our accreditation and Department of Education registration provide assurance that the quality of our programmes is of the highest standard. Our programmes are therefore nationally and internationally comparable and the credits earned with us are truly “portable,” i.e. they can be transferred to other accredited, registered institutions. The increasing number of international students confirms the acceptability of our programmes around the world.

Our MTh and PhD programmes were submitted to two of the most frequently used and highly recommended evaluators in the USA, namely the International Education Research Foundation, Inc. ([www.ierf.org](http://www.ierf.org)) and the American Association of Collegiate Registrars and Admissions Officers' International Education Services (<http://ies.aacrao.org>). Both confirmed that these degrees represent attainment of a level of education comparable to the equivalent degrees from a regionally accredited university in the United States.

Our degrees are recognised by the Brazilian and Argentinian governments, and are listed on [www.anabin.kmk.org](http://www.anabin.kmk.org), a German website, which provides information about the evaluation of foreign qualifications. The IQAS (International Qualification Assessment Service) in Alberta, Canada, an independent, secular assessment service used by many Canadian universities to establish the quality of foreign qualifications, has also evaluated the SATS BTh as the local equivalent of a “three year Bachelor's degree with a focus in theology.





## PARTNERING WITH SATS



Ambassador  
**Hugh Goosen**  
PhDc

"We believe in partnering with like-minded ministries, churches, institutions, and organisations, because we know that there is significant kingdom value in collaboration.

The two most common types of agreement are:

- **Articulation agreements:** If you offer a theological programme, we could have an articulation agreement that allows your graduates to further their studies at SATS.
- **Church agreements:** If your church or denomination needs to train its leaders, you could do this in association with SATS. SATS provides the formal theological training, while the church provides additional support services, such as mentoring.

If a partner ministry wishes to train its leaders through SATS, we can formalise the agreement through a *Letter of Association*. Once the agreement is in place, all students linked to the associated ministry who register with SATS will receive a 10 per cent discount on the advertised tuition fees.

### Please Note:

1. SATS is not an accrediting agency. We cannot accredit your Bible school or ministry training programme.
2. SATS cannot offer joint programmes. The law in South Africa mandates that we take full and sole responsibility for all teaching-and-learning in our programmes.

To find out more about the opportunities that exist through a SATS partnership please contact [hugh@sats.ac.za](mailto:hugh@sats.ac.za)



## ADVANTAGES OF STUDYING AT SATS

When you enrol at SATS, you meet a team of committed believers who are passionate about serving Jesus by serving you. Our team is creative, innovative, dedicated, and enthusiastic about the way they teach and serve your study needs. When you enrol at SATS, you can expect to



- grow under the teaching of a seminary and a team of lecturers who believe the Bible and love the Lord (Luke 6:40);
- receive an accredited qualification that is respected worldwide;
- love the convenience of instant online access to everything you need for your studies;
- experience a challenging programme that maintains high academic standards;
- enjoy fast, friendly service from academic and administrative staff;
- join a seminary that responds to the needs and inputs of its students;
- interact with peers from all around the world who love Jesus, making new friends in the process;
- learn from a diverse team of highly qualified academics who love Jesus and the truth;
- grow with a ministry that is innovative in its use of technology;
- benefit from a programme that is simultaneously thoroughly biblical and deeply practical;
- engage with lecturers who are actively engaged in theological research; and
- rest in the knowledge that our staff prays daily for our students.



**Gerald Munemo:** *"My journey with Sats has been a spiritually enriching experience, I am being equipped with tools that help me minister effectively to extend God's kingdom, and make much of Jesus Christ. I recommend SATS to ministers and even layman who seek to develop themselves spiritually and know more about God."*



## MySats

MySats is a high-quality, powerfully resourced online learning platform or 'virtual classroom' in which you will study. It is the central hub of the Seminary, the platform that makes online learning possible, wherever you live in the world.



When you enrol at SATS, you receive a welcome letter, which provides information on how to access MySats, the learning environment where you will find your courses, links to an online library, lecturers, classmates, assessment tasks and so on. From MySats, you can:

- See your curriculum
- Order and pay for your courses
- Access the Helpdesk
- Read or borrow almost 200,000 e-books (e-library)
- Download hundreds of thousands of journal articles (e-library)
- View your study materials for your courses
- Submit your assignments and access your feedback
- Participate in class discussions (forums)
- See the due dates for all your forthcoming activities
- Interact with the lecturer and fellow students
- Complete interactive lessons
- Write your examinations
- View your financial transactions

Our lecturers' task is to:

- Facilitate learning
- Foster research and communication skills
- Help integrate learning, worship and service



# OPERATIONAL TEAMS

## Senior Management



**Principal**  
Dr Kevin Smith  
DLitt, PhD



**Head of  
QA and Innovation**  
Dr Johannes Malherbe  
DTh



**Academic Dean**  
Dr Batanayi Manyika  
PhD



**General Manager**  
Mr Doug Timberlake  
MBA



**Registrar**  
Mrs Marilyn Schott  
MThc

## Administration and Support Team



**Enrolments Officer**  
Ms Sharon Eagle



**Executive Secretary**  
Mrs Lonel Fisher



**Accountant**  
Mr Victor Kunda  
BCompt



**Administrator**  
Mrs Jane Meyer  
BA



**Administrator**  
Mr Jabu Mnguni



**Administrator**  
Mrs Elsie James  
BA IR



**Administrator**  
Mrs Grace Sikhosana



**Administrator**  
Ms Joy Simalenga  
BCom Hons



**Administrator**  
Ms Michelle Mari  
LLB



**Quality Assurance Manager**  
Mr Caswell Ntseno  
PhDc



**Receptionist**  
Mrs Mpho Mogatwe  
BTh





# OPERATIONAL TEAMS

## Programmers / Technology and Development



**Head of Technology**  
Dr Timothy Churchill  
PhD



**Educational Technologist**  
Mr Ruan Huysen  
BTh Hons



**LMS Manager**  
Mr Mathieu Pelletier  
MA

## Marketing



**Team Leader**  
Mr Marno Kirstein  
PhDc



**Content Manager**  
Mr Rudolph Boshoff  
MThc



**Ambassador**  
Mr Hugh Goosen  
PhDc

# ACADEMIC TEAMS

## Programme Coordinators



**Head of Programme Delivery**  
Dr Jesse Kipimo  
PhD



**Programme Coordinator for HCCL**  
Dr Wilna Grey  
MMed, BTh Hons



**Programme Coordinator for BTh**  
Louie Naidoo  
MThc



**Programme Coordinator for Counselling Programmes**  
Candida Millar  
PhDc



**Programme Coordinator for BTh Honours**  
Pelham Lessing  
PhDc



**Programme Coordinator for MDiv**  
Dr Jesse Kipimo  
PhD



**Programme Coordinator for PhD and MTh**  
Dr Robert Falconer  
PhD





# ACADEMIC TEAMS

## Course Development Team



**Dr Pieter Labuschagne**  
PhD



**Michelle Kleynhans**  
MThc



**Suzanne van der Merwe**  
BTh Hons

---

## Teaching Team



**Academic Dean  
Dr Batanayi Manyika**  
PhD



**Dr Seyram Amenyedzi**  
PhD



**Bert Barnes**  
MThc



**Rudolph Boshoff**  
MThc



**Dr Robert Brodie**  
PhD



**Izaak Connaway**  
MTh



**Dr George Coon**  
PhD



**Estelle Crafford**  
MThc



**Jose De Carvalho**  
MTh



**Catherine Falconer**  
MTh



**Dr Robert Falconer**  
PhD



**Gursun Fortuin**  
MThc



**Hugh Goosen**  
PhDc



**Dr Wilna Grey**  
MMed, BTh Hons



**Dr Shaun Joynt**  
PhD



**Dr Abraham Byeong Jun**  
PhD





# ACADEMIC TEAMS

## Teaching Team (continued)



**Felix Kantondo**  
MTh



**Dr Jesse Kipimo**  
PhD



**Dr Pieter Labuschagne**  
PhD



**Pelham Lessing**  
PhDc



**Tawanda Maenzanise**  
MSocSci



**Candida Millar**  
PhDc



**Idalette Muller**  
BED Hons



**Patrick Mutombo**  
BTh



**Dr Modisa Mzondi**  
DLitt et Phil (x2)



**Louie Naidoo**  
MThc



**Dr Gabriel Ndhlovu**  
PhD



**Mathieu Pelletier**  
MA



**Sue Pnematicatos**  
BTh Hons



**Yvonne Roberg**  
MThc



**Selma Rudd**  
BA, HCCC



**Dr Willem Semmelink**  
PhD



**Grace Sepota**  
MA



**Dr Kevin Smith**  
DLitt, PhD



**Marian Smith**  
BTh Hons



**Adrian Tamblyn-Watts**  
MTh



# ACADEMIC TEAMS

## Teaching Team (continued)



**Jonathan Tudhope**  
BTh Hons



**Dr Cornelia van Deventer**  
PhD



**Beverley van Rensburg**  
MTh



**Dr Bert Watson**  
PhD



**Akheem Waqar**  
BTh Hons



**David Woods**  
MTh

## Supervising Team



**Dr Sylvain Allaboe**  
PhD (SATS),  
Systematic Theology, French



**Dr Seyram Amenyedzi**  
PhD (SU)  
Studies in Church and Society



**Dr Annang Asumang**  
PhD (SATS)  
Biblical Studies



**Dr Antonio Barro**  
PhD (Fuller), Studies in Church and  
Society, Spanish



**Dr Timothy Churchill**  
PhD (LST)  
Biblical Studies



**Dr George Coon**  
PhD (UT, Canada)  
Systematic Theology



**Dr Nicholas Darko**  
PhD (SATS)  
Practical Theology



**Dr Bill Domeris**  
PhD (Durham, UK)  
Biblical Studies



**Dr Robert Falconer**  
PhD (SATS)  
Systematic Theology



**Prof Godfrey Harold**  
PhD (UWC) and ThD (TGSAT)  
Systematic Theology



**Dr Nicolene Joubert**  
PhD (NWU)  
Practical Theology



**Dr Shaun Joynt**  
PhD (UP), Practical Theology  
Studies in Church and Society



# ACADEMIC TEAMS

## Supervising Team (continued)



**Dr Lynell Zogbo**  
PhD (UCLA)  
Biblical Studies



**Dr Luc Kabongo**  
PhD (UP), Studies in Church  
and Society, French



**Dr Jesse Kipimo**  
PhD (UNISA)  
Practical Theology, French



**Dr Pieter Labuschagne**  
PhD (UP), Biblical Studies  
Studies in Church & Society, French



**Prof Dan Lioy**  
PhD (NWU)  
Biblical Studies



**Dr Batanayi Manyika**  
PhD (SATS)  
Biblical Studies



**Dr Johannes Malherbe**  
DTh (SU), Biblical Studies  
Practical Theology



**Dr Modisa Mzondi**  
DLitt et Phil (X2, UJ),  
Practical Theology,  
Studies in Church and Society



**Dr Victor Nakah**  
DTh (SU)  
Practical Theology



**Dr Gabriel Ndhlovu**  
PhD (SATS)  
Systematic Theology



**Dr David Ngaruiya**  
PhD (SATS)  
Systematic Theology



**Dr Peter Penner**  
PhD (Karoli Gaspar Reformed  
University), Biblical Studies  
Studies in Church and Society,  
German



**Dr Linzay Rinquest**  
DTh (SU)  
Biblical Studies



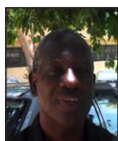
**Dr David Roldan**  
PhD (SATS), Systematic Theology,  
Spanish



**Dr Norberto Saracco**  
PhD (FIET), Spanish



**Dr Roger Tucker**  
PhD (UP), Practical Theology  
Studies in Church and Society



**Prof Yusuf Turaki**  
PhD (Boston University),  
Systematic Theology



**Dr Cornelia van Deventer**  
PhD (SU)  
Biblical Studies



**Dr Chuck Van Engen**  
PhD (Free University of Amsterdam)  
Spanish



**Prof Ernst Wendland**  
PhD (UW, USA)  
Biblical Studies

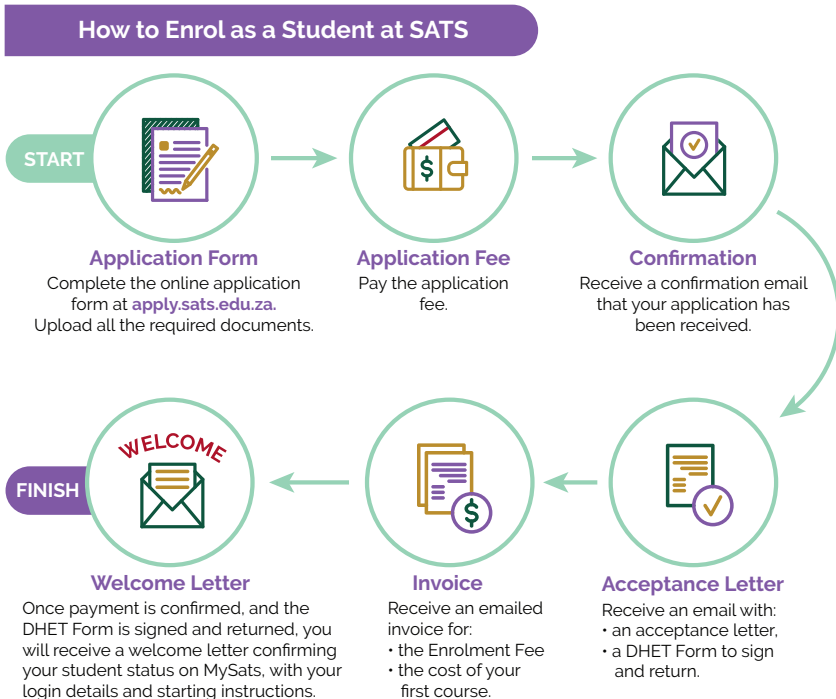
# LIBRARY

Our electronic library provides our staff and students with online access to approximately 200,000 e-books and 16,000 academic journals. You have unlimited access to those holdings. You can loan e-books just as you would loan books from a physical library; the only difference is that you read on a computer, a tablet, or a smartphone. You can save the chapters you want to keep for future reference—the publishers of most e-books have the limit set to either 60 or 100 pages that can be downloaded. Our e-journal holdings provide you with full-text access to thousands of journals and hundreds of thousands of scholarly articles.

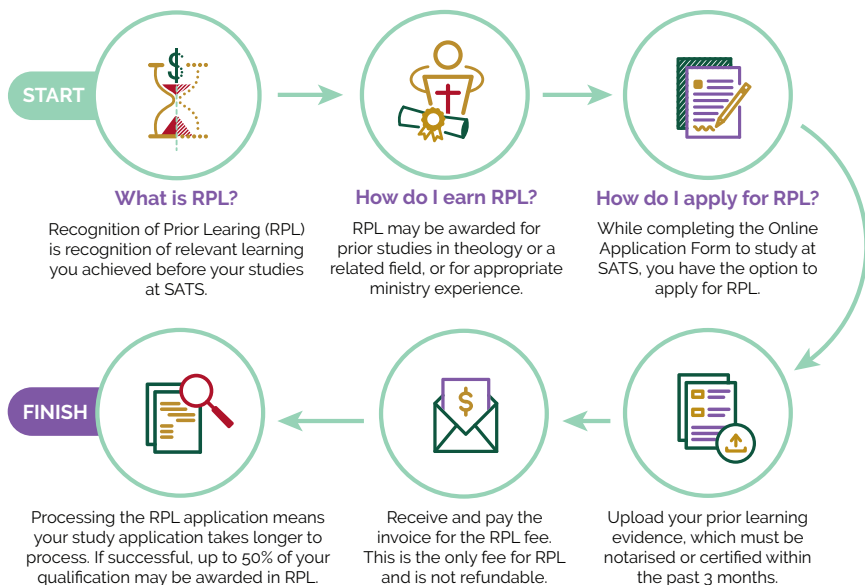
You can access all these holdings from the comfort of your own home. All you need to use them is an Internet connection and an electronic device on which to read them (e.g. laptop, tablet, or smartphone).

## ENROLMENT PROCEDURE

Our website has a user-friendly application facility, where you can apply, upload and submit your supporting documents.



## How do I receive recognition for prior learning at SATS?



## PRICING

The pricing for the various SATS programmes may be found on the SATS website: [sats.ac.za/pricing/](https://sats.ac.za/pricing/). You may buy anywhere between two and four courses per term. If you buy two or more courses at any time on the same invoice, discounts may apply. Consult the cost calculator to estimate the cost and duration of your studies, based on the number of courses you complete each year: [sats.ac.za/pricing/cost-calculator/](https://sats.ac.za/pricing/cost-calculator/). When you study the prices, please bear the following in mind:

1. **Total cost.** Our prices constitute the total cost of the programme. Textbooks for most of the courses are made available to our students online at no extra cost, and there are no travel or accommodation costs, as all our courses are taught online. For most tertiary programmes, the costs of travel, accommodation, and textbooks far surpass the cost of tuition.
2. **Pay per course.** You only need to pay for the courses or phases that you are taking, which means that the total cost of your studies is spread over the duration of your study programme.
3. **No refunds.** If for some reason you elect to cancel your enrolment in a course or withdraw from your study programme, no refunds will be given.



## FREQUENTLY ASKED QUESTIONS

### **What are credits? How are credits calculated?**

One credit equates to approximately 10 hours time taken on a task. At the undergraduate level, all courses are 12 credits, requiring approximately 120 hours of work; this includes research, writing of the assignment(s), and the examination. Since the courses at SATS run over 11–12 weeks, an average student should study 10–11 hours per week in each course. If you are familiar with the American system of counting credits, 1 US credit is equal to approximately 4 South African credits.

### **Do I need to buy textbooks?**

As most prescribed readings are freely available from our digital library, SATS courses do not generally require the purchase of textbooks. However, some courses do require you to purchase textbooks. Please visit the SATS website ([www.sats.ac.za](http://www.sats.ac.za)) to see whether you are required to purchase any textbooks for your programme.

### **Can I take courses for non-degree purposes?**

Yes! If you wish to take selected courses for self-enrichment without committing to a full certificate or degree programme, you are welcome to enrol for them. When you finish, you can request a transcript reflecting the courses passed for non-degree purposes.

Similarly, if you are registered for a programme and wish to take extra courses, in addition to the ones required for your degree, you are welcome to do so. For instance, you might be an MTh student who wishes to take Biblical Hebrew for extra credit. In such cases, the extra courses reflect on your academic record even though they are not required for your degree.

### **When can I enrol?**

You can enrol at SATS at any time of the year. You will commence your studies in the next available term.

### **In what languages does SATS teach?**

The official language of the Seminary is English. All courses are taught in English and all the instructional documentation of the Seminary is written in English. However, students who are not first-language English speakers are graded in a fair and equitable manner.

### **Does SATS make special provisions for students with disabilities?**

SATS tries to accommodate students with disabilities or special needs as much as is practical. Since we teach online, students need not travel to the campus. When medical needs necessitate, we grant students with disabilities extra time and we may allow them to submit oral assignments and examination answers instead of typed ones. Visually impaired students are encouraged to use 'text-to-speech' and 'speech-to-text' technologies.



## FREQUENTLY ASKED QUESTIONS

### **Will my denomination recognise my degree from SATS?**

There are several denominations currently enrolling students at SATS for their theological studies. You will need to contact the head of your denomination in order to find out if the SATS degree meets their denominational requirements. SATS does not ordain ministers.

### **Will my degree from SATS be recognised overseas?**

South African degrees are well respected overseas and, since SATS has the highest level of accreditation in South Africa, most foreign institutions will admit our graduates to further studies (see Accreditation and Registration). However, each institution is sovereign with respect to which applicants it admits, so no institution local or international is obliged to admit a SATS graduate (or, for that matter, a graduate from any other institution).

### **Does SATS offer bursaries?**

We have a small bursary fund for those who cannot afford to study. Bursaries are allocated in the form of a discount and are typically given to existing students who find themselves unable to afford the full SATS fees. To apply, you need to send a letter of motivation to [bursaries@sats.ac.za](mailto:bursaries@sats.ac.za).

### **How can I log a complaint or a grievance?**

Should you have reason to query the way in which the assessment of your assignments or examinations has been conducted, or if you wish to lay a complaint against a staff member, or if you have a grievance about any other matter related to your studies, you should follow the procedures laid out in the Student Handbook.

### **Do SATS' facilities comply with health-and-safety regulations?**

Yes, we have a detailed policy with accompanying procedures to ensure that our campus is safe and secure. Since students do not work on campus, this mostly affects staff.

### **Do I need to sign a registration contract with SATS?**

The Application Form functions as our registration contract. When you sign the Application Form, you agree to abide by the policies of the Seminary. The Department of Higher Education and Training requires you to sign its 'Confirmation of Programme' form when you register.





## GRADUATION

The high point of a student's many years of study is the graduation ceremony, and even though SATS is an online learning institution, we still host an annual graduation ceremony. Each year we carefully select a speaker to speak on a topic that will inspire our graduands to effectively apply their learning in service to the church.

We encourage family members to join our graduands for the ceremony, as this is a day of great celebration; they have spent many years sacrificing their time in completing their studies and this is the occasion to recognise their achievement.

Upon completion of their studies, students can opt to receive their certificates via post. However, a physical graduation ceremony is typically hosted annually, in Johannesburg. You will be informed by the Registrar that you have completed your programme and invited to attend the annual graduation ceremony.





## PROGRAMME INFORMATION

SATS offers Bible-based, academically rigorous, and practically relevant programmes. Like Hugh of St. Vincent, we believe education is the pursuit of wisdom and virtue, both of which are ultimately found in Christ through friendship with God. We design our programmes and our courses with the dual ambition of being both informative and transformative. We strive to engage the text and the context, the Word and the world, in ways that are God-glorifying and missional.

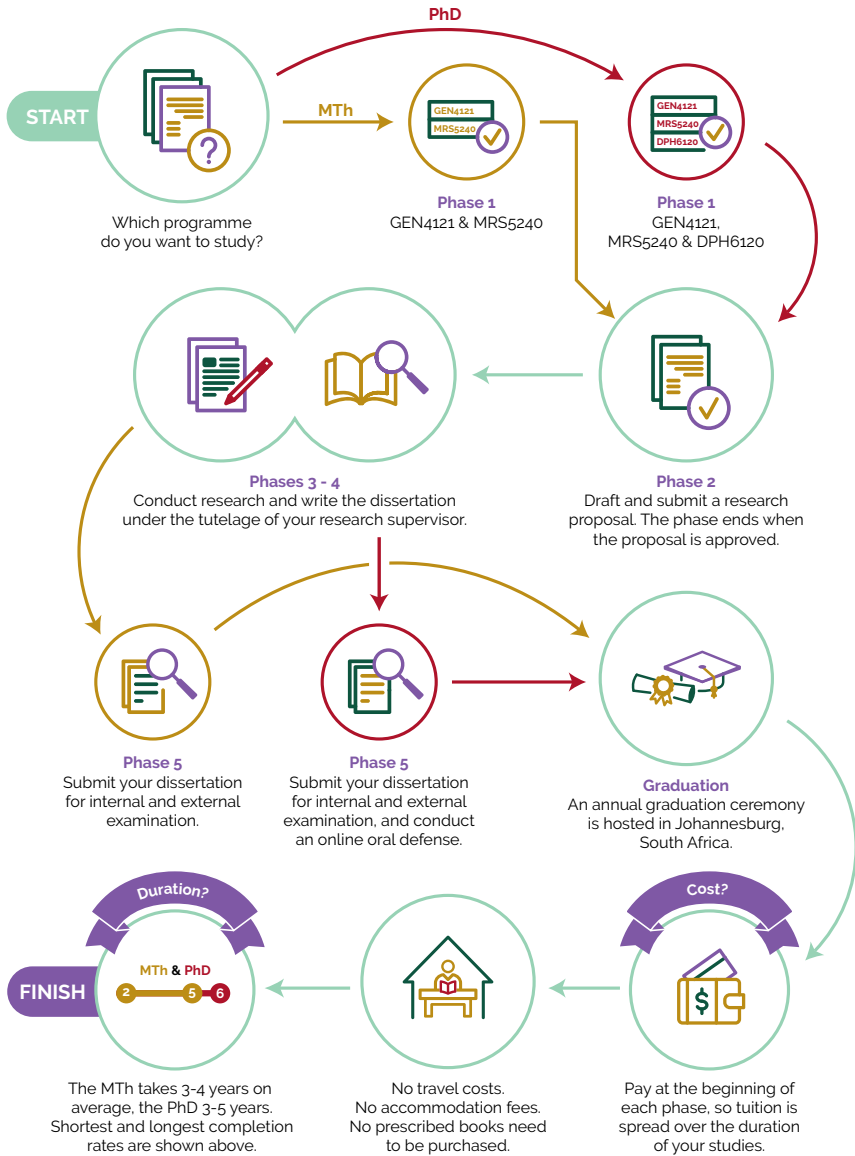
SATS is known for providing rich online learning experiences. Our MySats platform affords our students a world-class portal for e-learning, connecting you to your study materials, fellow students, course facilitator, library holdings, and assessment tasks. We aim to take the distance out of online education by automating processes that can and should be instant, freeing our staff to offer fast and friendly service where the personal touch is needed.

We serve people who are committed to the Lord Jesus Christ, who love and respect the Word of God, and dedicate their lives to advancing the kingdom of God through practical ministry. Like Pierre de la Ramée, we believe that theology is 'the doctrine of living well for God'.

Since all our teaching and learning takes place online, you will need regular and personal access to the Internet. SATS courses can be completed on a smartphone or a tablet but a personal computer is desirable for writing longer essays.

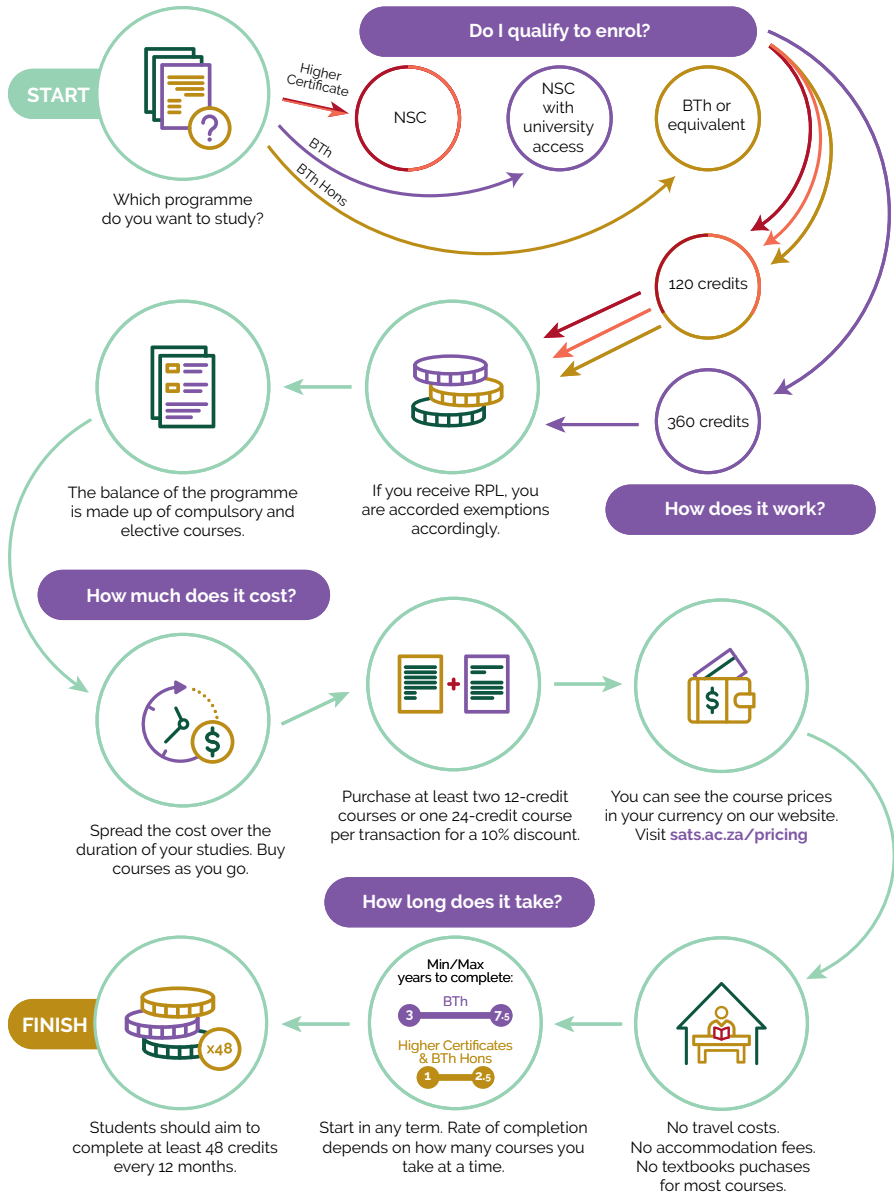


## How do our Research Programmes work?





## How do our Coursework Programmes work?





## DOCTOR OF PHILOSOPHY IN THEOLOGY

360 CREDITS ON NQF LEVEL 10

Our PhD is designed to raise up scholar-leaders in various fields of Christian ministry. It is a fully accredited online programme that provides the opportunity for ground-breaking theological research.

### Do I qualify?

To be admitted to the Doctor of Philosophy in Theology, a candidate must have achieved an above-average grade in their Master's degree. Additionally, a candidate must meet one of these admission requirements:

- An accredited Master's degree in a theological field, with a substantial research project.
- An accredited Master's degree in another field, with a substantial research project, accompanied by 4 years of accredited undergraduate theology.

Submit your application at [www.sats.ac.za](http://www.sats.ac.za) to determine if you qualify to study with us.

### How does it work?

The PhD is a research degree that culminates in an original dissertation of 80,000-100,000 words. The learning journey is divided into five phases.

**Phase 1** begins when you enrol. It consists of two online courses: GEN4121 Theological Orientation and MRS5240 Research Concept Development.

**Phase 2** requires you to draft and submit a formal research proposal, which you do in consultation with your appointed supervisor, a scholar specialising in your research area. The phase ends when the SATS Research Committee approves your research proposal.

**Phases 3-4** are where you conduct the research and write the dissertation, under the tutelage of your appointed supervisor.

**Phase 5** is about examination! You submit your dissertation for internal and external examination, making the required improvements. You must also submit an article based on the thesis. The PhD journey culminates in the online oral defence. This takes place after the dissertation passes both the internal and external evaluation process. The student is required to defend his or her thesis by responding to questions posed by a team of experts in the chosen fields of study.





### How long does it take?

The minimum duration is two years, but the average completion time is 3–5 years. You have a maximum of six years to finish.

### How much does it cost?

Please consult the website ([sats.ac.za/pricing](http://sats.ac.za/pricing)) for pricing applicable to your region of the world, but please bear the following in mind when assessing the financial implications:

1. You pay at the beginning of each phase, so the tuition is spread over 3–5 years (the average time it takes to finish).
2. The tuition fees are the total cost of the programme. There are no hidden costs, no travel costs, no accommodation costs, and no prescribed books to purchase. For many PhD programmes, these 'hidden' costs can easily double or triple the total cost.

Kindly note that all fees paid to SATS are non-refundable and that prices are increased annually.





## MASTER OF THEOLOGY

180 CREDITS ON NQF LEVEL 9

Our MTh is a research-based degree that is fully accredited and completely online. The degree takes the form of a substantial research project on a topic that is relevant to your life or ministry. You conduct the research under the guidance of a specialist supervisor.

### Do I qualify?

To be admitted to the Master of Theology, a candidate must have achieved an above-average grade in their previous degree. Additionally, a candidate must meet one of these admission requirements:

- An accredited four-year Bachelor Honours degree in a theological field.
- An accredited Bachelor Honours degree in another field accompanied by an accredited Diploma or Bachelor in Theology.

Submit your application at [www.sats.ac.za](http://www.sats.ac.za) to determine if you qualify to study with us.

### How does it work?

The MTh is a research degree that culminates in an original thesis of 40,000–50,000 words. The process is divided into five phases.

**Phase 1** begins when you enrol. It consists of two online courses: GEN4121 Theological Orientation and MRS5240 Research Concept Development.

**Phase 2** requires you to draft and submit a formal research proposal, which you do in consultation with your appointed supervisor, a scholar specialising in the field of the research. The phase ends when the SATS Research Committee approves your research proposal.

**Phases 3–4** are where you conduct the research and write the thesis, under the tutelage of your appointed supervisor.

**Phase 5** is about examination! You submit your thesis for internal and external examination, making the required improvements.





### How long does it take?

The minimum duration is two years, but the average completion time is 3–4 years. You have a maximum of five years to finish.

### How much does it cost?

Please consult the SATS website ([www.sats.ac.za](http://www.sats.ac.za)) for pricing applicable to your region of the world. Please bear the following in mind when assessing the financial implications:

1. You pay at the beginning of each phase, so the tuition is spread over 3–4 years (the average completion time).
2. The tuition fees are the total cost of the programme. There are no hidden costs, no travel costs, no accommodation costs, and no prescribed books to purchase. For many MTh programmes, these 'hidden' costs can easily double or triple the total cost.

Kindly note that all fees paid to SATS are non-refundable and that prices are increased annually.





## MASTER OF DIVINITY

240 CREDITS ON NQF LEVEL 9

Our Master of Divinity programme is fully accredited and completely online. This is a two-year professional master's degree designed for pastors and leaders in ministry. Since it does not require a prior degree in theology, it is the ideal gateway into advanced theological and ministerial training for second-career pastors.

### Do I qualify?

To be admitted to the MDiv, a candidate must have achieved an above-average grade in their previous degree. Additionally, a candidate must meet one of these admission requirements:

- An accredited four-year Bachelor Honours degree in English, Engineering, Education, or any other academic discipline. You do not need to have any prior studies in theology.
- An accredited three-year degree (NQF 7 in South Africa), we will allow you to do one year of bridging work to gain access to the MDiv.

Submit your application at [www.sats.ac.za](http://www.sats.ac.za) to determine if you qualify to study with us.

Please note that the MDiv programme does not grant direct access to the PhD programme; the MDiv grants access to the MTh programme, which in turn grants access to the PhD.

### How does it work?

The programme requires you to complete 15 courses and a capstone research project. The classes focus on the Bible and ministry, with a secondary concentration on theology.

The MDiv culminates in a 60-credit capstone project, which is more in the mould of major paper than a thesis.

### Compulsory Courses

GEN4121	Theological Orientation
MIN5121	Ministry Practicum 1
MIN5122	Ministry Practicum 2
RES5600	Structured Master's Thesis

Students must take two subjects of their choice from each of the following fields:

### 12-Credit Electives

#### Old Testament (any 2)

- OTS5121 Deuteronomy and Biblical Ethics
- OTS5122 Nehemiah and Christian Leadership
- OTS5123 Preaching and Teaching the Psalms
- PRA4122 Judges and Narrative Preaching





### **New Testament (any 2)**

- NTS5122 The Pastoral Epistles and Pastoral Ministry
- NTS5124 Acts: The Missional Church
- BIB4123 Ephesians: The Unified Church
- NTS5121 The Gospels: What Jesus Taught

### **Practical Theology (any 2)**

- THE4123 Children, Bible and Theology
- PTS5122 Expository Preaching
- PTS5123 Marketplace Ministry
- PTS5124 Discipleship

### **Church and Society (any 2)**

- CHS5121 Islamic Worldview and Religion
- CHS5122 African Worldview and Religion
- CHS5123 Understanding the Times
- CHS5124 Understand the Margins

### **Systematic Theology (any 2)**

- THE5121 The Kingdom in Church and Mission
- THE5122 Sin and Salvation in Cultural Context
- THE5123 The Holy Spirit – a Global Perspective

### **How long does it take?**

The minimum duration is two years, but the average completion time is 3–4 years. You have a maximum of five years to finish.

### **How much does it cost?**

Please consult the SATS website ([sats.ac.za/pricing](http://sats.ac.za/pricing)) for pricing applicable to your region of the world. Please bear the following in mind when assessing the financial implications:

1. You only pay for courses when you are ready to take them. Therefore, your costs are spread over the duration of your programme.
2. The tuition fees are the total cost of the programme. There are no hidden costs, no travel costs, and no accommodation costs.

Kindly note that all fees paid to SATS are non-refundable and that prices are increased annually.





## BACHELOR OF THEOLOGY (HONOURS) 120 CREDITS ON NQF LEVEL 8

The BTh Honours is a one-year postgraduate degree that builds on a three-year degree. You would likely choose the BTh Honours for one of three reasons. Firstly, to further advance your biblical and theological understanding. This qualification will stand you in good stead if you feel called as a theological educator or as a preaching and teaching pastor, seeking to develop training material for your church. Secondly, it serves as a bridge between Bachelor's level coursework and Master's level research. Thirdly, it provides a potential access point into theological studies for students who have degrees in other disciplines.

### Do I qualify?

To qualify for admission to the BTh Honours, a candidate must have achieved an above-average grade in their undergraduate degree. Additionally, a candidate must meet one of these admission requirements:

- An accredited Bachelor of Theology or cognate qualification.
- An accredited Bachelor degree in another field accompanied by an accredited Certificate or Diploma in Theology.

If you have a non-theological Bachelor degree, you can do the required bridging coursework with SATS to gain access to the BTh Honours.

Submit your application at [www.sats.ac.za](http://www.sats.ac.za) to determine if you qualify to study with us.

### How does it work?

The Honours curriculum consists of one 24 credit course; the rest are 12 credits. The 24 credit course runs over 6 months, while the 12 credit courses take 3 months. There are three compulsory courses. You must accumulate 120 credits to complete the BTh Hons.

Unless otherwise indicated, the pass mark for all assessment tasks is 50 per cent. A distinction is 75 per cent. To pass a course, you must maintain a grade average of 50 percent or above.

GEN4121	Theological Orientation
RES4122	Research Methodology
RES4241	Research Project

### 12-Credit Electives

- BIB4123 Ephesians
- BIB4124 Old Testament Studies
- BIB4129 New Testament Studies
- GEN4122 Directed Theological Reading
- MIS4121 Mission as Engagement







- MIS4122 Understanding Islam (*Prerequisite for MIS4123*)
- MIS4123 Critiquing Islam (*Prerequisite is MIS4122 or MIS3125*)
- NTS5122 Pastoral Epistles and Pastoral Ministry
- OTS5123 Preaching and Teaching the Psalms
- PRA4121 Practical Theology
- PRA4122 Judges and Narrative Preaching
- THE4123 Children, Bible and Theology
- THE4124 Systematic Theology

### How long does it take?

A full-time student would expect to finish the BTh Hons in one year but the average time for part-time students to complete the Honours programme is 2½ years. You have a maximum of three years to finish.

**Please note:** You are required to complete 48 credits every twelve months, commencing with the date of enrolment.

### How much does it cost?

Please consult the SATS website ([www.sats.ac.za](http://www.sats.ac.za)) for pricing applicable to your region of the world. Please bear the following in mind when assessing the financial implications:

1. You only pay for courses when you are ready to take them. Therefore, your costs are spread over the duration of your programme.
2. The tuition fees are the total cost of the programme. There are no hidden costs, no travel costs, and no accommodation costs.

Kindly note that all fees paid to SATS are non-refundable and that prices are increased annually.





## BACHELOR OF THEOLOGY (HONOURS) WITH A COUNSELLING CONCENTRATION.

This programme is designed for those who are preparing to serve as professional Christian counsellors. You will be trained in both narrative counselling and logotherapeutic practices from a Christian perspective. When you graduate, you will be well equipped to serve as a Christian counsellor in your church and community. You will also be eligible to register for a research-based Master of Theology, specialising in either narrative or logotherapeutic Christian counselling.

### Do I qualify?

To qualify for admission to the BTh Honours with a counselling focus, a candidate must have achieved an above-average grade in their undergraduate degree. Additionally, a candidate must meet one of these admission requirements:

- A BTh or equivalent degree with at least 60 credits of counselling. If your degree has insufficient counselling content, you can still register for the programme but you will be asked to complete two bridging courses (CCC1129 and CCC1128).
- A Bachelor's degree in another field with an accredited certificate or diploma in theology. You may also be asked to complete two bridging courses (CCC1128 and CCC1129), unless your Bachelor's degree includes sufficient credits in psychology or counselling.

Submit your application at [sats.ac.za](http://sats.ac.za) to determine if you qualify to study with us.

### How does it work?

The BTh Honours with a focus in Christian counselling curriculum consists of five 24-credit papers, the first of which is an orientation to the theological and ethical aspects of counselling. The next two papers train you to use narrative counselling and the last two will train you in logotherapeutic methods of counselling.

### Compulsory Courses:

#### Paper 1: Orientation

- GEN4121 Theological Orientation
- CCC4121 Ethics in Christian Counselling

#### Paper 2: CCC4241: Narrative Counselling as Pastoral Care

#### Paper 3: CCC4242: Narrative Counselling and the Church

#### Paper 4: CCC4243: Logotherapy as Ministry

#### Paper 5: CCC4244: Logotherapy and Community

### Additional Course for CPSC Designation 5 Students only:

- CCC2121 Psychopathology & Spiritual Conflicts





### **How long does it take?**

You will need 2½–3 years to complete the degree as you are only able to take one course at a time.

### **How much does it cost?**

Please consult the SATS website ([sats.ac.za/pricing](https://sats.ac.za/pricing)) for pricing applicable to your region of the world. Please bear the following in mind when assessing the financial implications:

1. You only pay for courses when you are ready to take them. Therefore, your costs are spread over the duration of your programme.
2. The tuition fees are the total cost of the programme. There are no hidden costs, no travel costs, and no accommodation costs.

Kindly note that all fees paid to SATS are non-refundable and that prices are increased annually.





## BACHELOR OF THEOLOGY

360 CREDITS ON NQF LEVEL 7 (30 COURSES OF 12 CREDITS EACH)

The BTh is the ideal preparation for those called to pastoral ministry or other forms of vocational Christian service. Our BTh contains a strong, balanced focus on Bible, theology, and ministry.

### Do I qualify?

To register for the BTh, you need to have a school-leaving certificate that grants university access. If you do not qualify for direct admission to the BTh, you can start with the Higher Certificate in Christian Life.

### How does it work?

The BTh requires you to earn 360 credits, spread across NQF levels 5–7, where first-year courses are on level 5 and third-year courses on level 7. Since all the courses are 12 credits, you must complete 30 courses to earn your degree. You must earn 120 credits at the exit level; that is, you must do 10 third-year courses.

The courses are divided into *compulsory* and *elective* categories. You must do all the compulsory courses and make up the remainder of your curriculum by choosing electives.

Unless otherwise indicated, the pass mark for all assessment tasks is 50 per cent. A distinction is 80 per cent. To pass a course, you must maintain a grade average of 50 per cent or above.

If you have completed prior theological studies, you may apply for exemption from courses that you have covered previously. Applications for exemptions must be done before studies are commenced at SATS and are therefore done as part of the online application.





## BTh First Year

These courses are compulsory:

- BIB1121 How to Study the Bible
- BIB1123 The Words and Works of Jesus
- PRA1122 Introduction to Youth Ministry
- THE1120 Introduction to Theology
- THE1121 Christian Foundations
- THE1122 Biblical Worldview

Select any four from these:

- BIB1122 1 Corinthians
- BIB1124 Survey of the Old Testament
- BIB1125 Deuteronomy
- PRA1121 Christian Relationships
- PRA1124 Biblical Leadership
- THE1123 The Holy Spirit: What the Bible teaches
- THE1124 Survey of Church History
- BGK1121 Biblical Greek 1A (*Two Textbooks Required*)
- BGK1122 Biblical Greek 1B (*Prerequisite BGK1121*)
- BHB1121 Biblical Hebrew 1A (*Textbook Required*)
- BHB1122 Biblical Hebrew 1B (*Prerequisite BHB1121*)

**NB.** To reap the full benefits of the Biblical Language courses, you will need to take all 4 Greek or Hebrew courses.





## BTh Second Year

These courses are compulsory:

- BIB2121 Hermeneutics (*Prerequisite for PRA2123*)
- BIB2123 The Historical Books
- BIB2125 Paul's Letters
- MIS2124 Mission of God
- THE2122 The Doctrine of Man and Sin (*Prerequisite for THE2123*)
- THE2123 The Doctrine of Salvation (*Prerequisite is THE2122*)

Select any four from these:

- BIB2122 The Pentateuch
- BIB2124 The Book of Acts
- BIB2126 Psalms
- MIS2122 Contemporary Issues in Missions
- MIS2123 The Historical Perspective on Missions
- PRA2121 Christian Counselling 1 (*Prerequisite for PRA3124*)
- PRA2122 The Pastoral Ministry
- PRA2123 Homiletics (*Prerequisite is BIB2121*)
- PRA2124 Children at Risk
- THE2121 The Doctrine of the Church
- THE2124 The Doctrine of God
- BGK2121 Biblical Greek 2A (*Prerequisite BGK1122*)
- BGK2122 Biblical Greek 2B (*Prerequisite BGK2121*)
- BHB2121 Biblical Hebrew 2A
- BHB2122 Biblical Hebrew 2B

## BTh Third Year

These courses are compulsory:

- BIB3128 Genesis
- BIB3129 Romans
- THE3121 The Doctrine of the Kingdom
- THE3123 Apologetics
- THE3124 Christian Ethics

Select any five from these:

- BIB3121 The Wisdom Books
- BIB3122 The General Letters
- BIB3123 The Book of Hebrews
- BIB3127 Prophetic Books
- MIS3121 World Religions
- MIS3124 Church Growth
- MIS3125 Islam (*Prerequisite for MIS4123*)
- PRA3121 Conflict and Reconciliation (*Textbook Required*)
- PRA3124 Christian Counselling 2 (*Prerequisite PRA2121*)
- PRA3125 Church Leadership
- PRA3126 Church Administration
- THE3122 The Doctrine of Revelation
- THE3126 African Theology





### How long does it take?

A full-time student would expect to finish the BTh in three years but the average time for part-time students to complete the BTh programme is 6 years. You have a maximum of 8 years to finish.

**Please note:** You are required to complete 48 credits every twelve months, commencing with the date of enrolment.

### How much does it cost?

Please consult the SATS website ([www.sats.ac.za](http://www.sats.ac.za)) for pricing applicable to your region of the world. Please bear the following in mind when assessing the financial implications:

1. You only pay for courses when you are ready to take them. Therefore, your costs are spread over the duration of your programme.
2. The tuition fees are the total cost of the programme. There are no hidden costs, no travel costs, and no accommodation costs.

Kindly note that all fees paid to SATS are non-refundable and that prices are increased annually.





## BACHELOR OF THEOLOGY WITH A COUNSELLING CONCENTRATION

The BTh with a counselling focus provides advanced training for Christian and pastoral counsellors. The programme integrates theology and counselling from a Bible-based, Christ-centred, Spirit-led perspective. If you complete this programme, you will not only be well-equipped to help hurting people, but you will also be able to register as an Intermediate Religious Professional in Christian Pastoral Counselling with the Council for Pastoral and Spiritual Counsellors.

### Do I qualify?

To register for the BTh with a counselling focus, you need to have a school-leaving certificate that grants university access. If you do not qualify for direct admission to the BTh, you can start with either of the Higher Certificates offered by SATS.

Students who have successfully completed the BTh with a counselling focus will be granted entry into the BTh Honours with a counselling focus.

### How does it work?

This is a structured BTh programme. By choosing this programme, students choose in advance to take all their electives (twelve courses) as counselling courses. Bible and Theology courses will make up 60 per cent (216 credits), and the counselling courses 40 per cent (144 credits).

### BTh First Year

- BIB1121 How to Study the Bible
- BIB1123 The Words and Works of Jesus
- PRA1122 Introduction to Youth Ministry
- THE1120 Introduction to Theology
- THE1121 Christian Foundations
- THE1122 Biblical Worldview
- CCC1121 Human Development and Christian Counselling
- CCC1127 Excellence in Christian Counselling - Ethical & Legal Issues
- CCC1128 Theoretical Foundations of Christian Counselling
- CCC1129 Biblical Basis and Introduction to Christian Counselling

### BTh Second Year

- BIB2121 Hermeneutics (*Prerequisite for PRA2123*)
- BIB2123 Historical Books
- BIB2125 Paul's Letters
- MIS2124 The Mission of God
- THE2122 The Doctrine of Man and Sin (*Prerequisite for THE2123*)
- THE2123 The Doctrine of Salvation (*Prerequisite is THE2122*)
- CCC2121 Psychopathology and Spiritual Conflicts
- CCC2122 Relationships, Marriage and Family Christian Counselling
- CCC2128 Child and Adolescent Christian Counselling
- CCC2129 Counselling Skills (*Practicum-1*)







### **BTh Third Year**

- BIB3128 Genesis
- BIB3129 Romans
- MIS3121 World Religions
- THE3121 Doctrine of the Kingdom
- THE3123 Apologetics
- THE3124 Christian Ethics
- CCC3120 People in Crisis - Pastoral Care and Counselling
- CCC3121 Gerontology - Pastoral Care and Counselling
- CCC3122 The Church in Community – Pastoral Care and Counselling
- CCC3123 Substance Abuse - Pastoral Care and Counselling

### **What textbooks do I need?**

For most courses, you are provided with electronic textbooks and readers, but if you choose to enrol for the BTh with a concentration in Christian Counselling, you need to purchase required counselling textbooks. The textbooks are the same as those required for the Higher Certificate in Christian Counselling.

### **How long does it take?**

A full-time student would expect to finish the BTh in three years but the average time for part-time students to complete the BTh programme is 6 years. You have a maximum of 8 years to finish.

**Please note:** You are required to complete 48 credits every twelve months, commencing with the date of enrolment.

### **How much does it cost?**

Please consult the SATS website ([www.sats.ac.za](http://www.sats.ac.za)) for pricing applicable to your region of the world. Please bear the following in mind when assessing the financial implications:

1. You only pay for courses when you are ready to take them. Therefore, your costs are spread over the duration of your programme.
2. The tuition fees are the total cost of the programme. There are no hidden costs, no travel costs, and no accommodation costs.

Kindly note that all fees paid to SATS are non-refundable and that prices are increased annually.





## HIGHER CERTIFICATE IN CHRISTIAN LIFE

120 CREDITS ON NQF LEVEL 5 (10 COURSES OF 12 CREDITS EACH)

The HCCL offers a thorough grounding in the essentials of theological and ministerial training. The programme is suitable for pastors needing foundational theological studies and for elders, deacons, and other men and women serving actively in their churches. The three stand-out characteristics of the programme are that it is biblical (you will grow in Bible knowledge), practical (you will grow in ministry skills), and spiritual (you will grow in your walk with Christ).

There are two other reasons why you might register for the HCCL.

1. If you wish to enrol for the BTh but you do not meet the admission requirements, you can do the HCCL. When you graduate, you can continue with the BTh.
2. If you have a non-theological degree and you wish to enrol for the BTh Honours, you can do the HCCL as a bridge into the Honours.

### Do I qualify?

To register for the HCCL, you need to have a school-leaving certificate. In South Africa, this is a National Senior Certificate (NSC). If you have an accredited tertiary qualification, we accept that in lieu of a school-leaving certificate.

If you do not have a school-leaving certificate, you may be admitted to the HCCL on the basis of RPL. You will be asked to complete the first five courses on probation as stand-alone subjects. If you pass them, demonstrating that the ability to study at this level, you may enrol for the HCCL.

If you complete the HCCL and wish to enrol for the BTh, 60 credits from the HCCL may be transferred to the BTh.

### How does it work?

The HCCL requires you to earn 120 credits on NQF level 5. Since all the courses are 12 credits, you must complete 10 courses to earn your certificate. The courses are divided into compulsory and elective categories. You must do all the compulsory courses and make up the remainder of your curriculum by choosing electives.

Unless otherwise indicated, the pass mark for all assessment tasks is 50 per cent. A distinction is 80 per cent. To pass a course, you must maintain a grade average of 50 per cent or above.

If you have completed prior theological studies, you may apply for exemption from courses that you have covered previously. Applications for exemptions must be done before studies are commenced at SATS and are therefore done as part of the online application.





### **These courses are compulsory**

- BIB1121 How to Study the Bible
- BIB1123 The Words and Works of Jesus
- THE1120 Introduction to Theology
- THE1121 Christian Foundations
- THE1122 Biblical Worldview

### **Select any five from these:**

- BIB1124 Survey of the Old Testament
- BIB1125 Deuteronomy
- BIB1122 1 Corinthians
- MIS2122 Contemporary Issues in Missions
- MIS2124 The Mission of God
- PRA1121 Christian Relationships
- PRA1122 Introduction to Youth Ministry
- PRA1124 Biblical Leadership 1
- THE1123 The Holy Spirit: What the Bible teaches
- THE1124 Survey of Church History
- THE2121 The Doctrine of the Church

### **How long does it take?**

The minimum duration is one year, but the average completion time for part-time students is two years. You have a maximum of three years to finish.

**Please note:** You are required to complete 48 credits every twelve months, commencing with the date of enrolment.

### **How much does it cost?**

Please consult the SATS website ([www.sats.ac.za](http://www.sats.ac.za)) for pricing applicable to your region of the world. Please bear the following in mind when assessing the financial implications:

1. You only pay for courses when you are ready to take them. Therefore, your costs are spread over the duration of your programme.
2. The tuition fees are the total cost of the programme. There are no hidden costs, no travel costs, and no accommodation costs.

Kindly note that all fees paid to SATS are non-refundable and that prices are increased annually.





## HIGHER CERTIFICATE IN CHRISTIAN COUNSELLING

132 CREDITS ON NQF LEVEL 5

The HCCC is an outstanding programme for training lay counsellors. It is designed for pastoral counsellors and for lay counsellors serving in the context of churches or parachurch organisations. The programme is based on the Paraklesis Model of Christian Counselling, written by Prof. Mervin van der Spuy. This comprehensive programme integrates psychology and theology to offer SATS students bible-based, psychologically-sound counselling training.

### Do I qualify?

To register for the HCCC, you need to have a school-leaving certificate. In South Africa, this is a National Senior Certificate (NSC). If you have an accredited tertiary qualification, we accept that in lieu of a school-leaving certificate.

If you do not have a school-leaving certificate, you may be admitted to the HCCC on the basis of RPL. You will be asked to complete the first five courses on probation as stand-alone subjects. If you pass them, demonstrating that the ability to study at this level, you may enrol for the HCCC.

If you complete the HCCC and wish to enrol for the BTh, 60 credits from the HCCC may be transferred to the BTh.

### How does it work?

The HCCC requires you to earn 132 credits on NQF level 5. Since all the courses are 12 credits, you must complete 11 courses to earn your certificate.

The courses are divided into compulsory (84 credits) and elective (48 credits) categories. You must do all the compulsory courses and make up the remainder of your curriculum by choosing electives.

The HCCC is a structured programme and courses must be completed in a particular order. Please consult the SATS website ([sats.ac.za](http://sats.ac.za)) for more information about the structure of the HCCC.

Unless otherwise indicated, the pass mark for all assessment tasks is 50 per cent. A distinction is 80 per cent. To pass a course, you must maintain a grade average of 50 per cent or above.





**These Courses are compulsory:**

- CCC1121 Human Development and Christian Counselling
- CCC1127 Excellence in Christian Counselling – Ethical and Legal Issues
- CCC1128 Theoretical Foundations of Christian Counselling
- CCC1129 Biblical Basis and Introduction to Christian Counselling
- CCC2121 Psychopathology and Spiritual Conflicts
- CCC2129 Counselling Skills (*Practicum-1*)
- THE1120 Introduction to Theology

**Select any four from these:**

- CCC1123 Introduction to Crisis and Trauma Counselling
- CCC1124 Introduction to Domestic Violence and Abuse
- CCC1125 Introduction to Wellness Counselling
- CCC1126 Introduction to Addictions Counselling
- CCC2122 Relationships, Marriage and Family Christian Counselling
- CCC2123 Introduction to Community Care and Counselling
- CCC2124 Introduction to Ageing, Death, Dying and Bereavement
- CCC2127 Introduction to Medicine, Health and Healing
- CCC2128 Child and Adolescent Christian Counselling

**How long does it take?**

The minimum duration is one year, but the average completion time for part-time students is two years. You have a maximum of three years to finish.

**Please note:** You are required to complete 48 credits every twelve months, commencing with the date of enrolment.





### How much does it cost?

Please consult the SATS website ([www.sats.ac.za](http://www.sats.ac.za)) for pricing applicable to your region of the world. Please bear the following in mind when assessing the financial implications:

1. You only pay for courses when you are ready to take them. Therefore, your costs are spread over the duration of your programme.
2. The tuition fees are the total cost of the programme. There are no hidden costs, no travel costs, and no accommodation costs.

Kindly note that all fees paid to SATS are non-refundable and that prices are increased annually

### TEXTBOOKS

You need to purchase the following textbooks for the HCCC:

Collins, G. 2007. *Christian Counseling: a Comprehensive Guide* (Third Edition). Thomas Nelson.

Meier, Minirth, Wichern & Ratcliff. 1999. *Introduction to Psychology and Counseling: Christian Perspectives and Applications*. 2nd Ed. Baker Books.

Tan, S. & Scalise, E.T. 2016. *Lay Counseling: Equipping Christians for a Helping Ministry*. (Revised & Updated). Zondervan.

Tan, Siang-Yang, 2011. *Counseling and Psychotherapy: A Christian Perspective*. Baker Publishing.





## STAND ALONE COURSES

If you would like to take a single course, without enrolling for a whole qualification, you can.

Visit our website: [apply.sats.ac.za](http://apply.sats.ac.za) and select the standalone option on the application form.

You may choose any course from the list provided.

Pay the price of the course and you will be added to the class at the start of the next term in which it is offered.

### Cost of Stand Alone Courses

Please consult the SATS website ([sats.ac.za/pricing](http://sats.ac.za/pricing)) for pricing applicable to your region of the world.

Kindly note that all fees paid to SATS are non-refundable and that prices are increased annually.





# COURSE DESCRIPTIONS

## BIBLICAL STUDIES

- BIB1121**    **How to Study the Bible:** This is a practical course about how to study the Bible step-by-step. The course introduces you to methods and tools for serious Bible study using English Bibles.
- BIB1122**    **1 Corinthians:** The Corinthians were not a good example in their days. There was immorality in the church, they took each other to court, looked down on each other and did not keep their promise to support other Christians financially. This course on 1 Corinthians focuses on applying the message of this book to our own Christian life today.
- BIB1123**    **The Words and Works of Jesus:** This course provides a closer look at the life and ministry of Jesus that inform the Church and Christian workers' witness.
- BIB1124**    **Survey of the Old Testament:** The objective of an Old Testament Survey is to provide an interpretive framework for understanding the Old Testament so that you can begin to feel at home in its pages.
- BIB2121**    **Hermeneutics:** The very nature of Scripture as the Word of God is communication, and thus, requires interpretation. To grow in these skills, students need to learn the appropriate tools and processes of analysis, and to practice the use of such devices and methods.
- BIB2122**    **The Pentateuch:** The Pentateuch is foundational to the Jewish and Christian faith. This course provides you with an overview of the Pentateuch aiming to arouse your interest in the world of the Old Testament. Equipped with a measure of background information, you will begin to comprehend more clearly the purpose of God for humanity as it unfolds in the Bible.
- BIB2123**    **The Historical Books:** This course provides an overview of the twelve Old Testament books from Joshua to Esther. This preliminary study of the Old Testament aims to introduce themes, purposes, and historical background to the historical books.
- BIB2124**    **The Book of Acts:** This course provides an in-depth study of the exhilarating Acts of the Apostles, the Early Church, and of the Holy Spirit. This subject paints a portrait of how Christianity burst onto the scenes of the Judea-Greco-Roman world.
- BIB2125**    **Paul's Letters:** This course is a study of the Apostle Paul within the first-century Greco-Roman context. This course surveys his thirteen letters and summarises his historical, theological, and pastoral contributions to the Christian faith.





## COURSE DESCRIPTIONS

- BIB2126** **Psalms:** This media-rich, interactive course introduces the Book of Psalms as lyric poems, exploring their structure and genres like hymns, lament, thanksgiving and wisdom. Learn about important devices in Hebrew writing such as parallelism and imagery, and demonstrate your ability to explicate a Psalm.
- BIB3121** **The Wisdom Books:** What is biblical wisdom? This course examines the five wisdom books of the Old Testament, namely, Job, Psalms, Proverbs, Ecclesiastes, and Song of Songs. After an introductory module dealing with wisdom literature as a genre of the Bible, the course guides you to explore divine wisdom in each of the five books.
- BIB3122** **The General Letters:** This course explores in some detail the seven short, "general" or "catholic" letters that appear near the end of the New Testament, namely: James, 1–2 Peter, 1–3 John, and Jude. It includes written assessments where you will need to source scholarly materials to examine literary and theological aspects of the letters.
- BIB3123** **The Book of Hebrews:** The book of Hebrews is one of the most beautifully written, powerfully argued, and theologically profound writings in the New Testament. Its central theme is to exhort readers to persevere in the faith and exhibit a life of faithfulness patterned by Jesus Christ Himself.
- BIB3127** **The Prophetic Books:** This course presents a survey of the Old Testament prophetic books, which are essential for understanding the history and future of our faith. The course provides historical context and tools for interpreting the prophets of Israel, relating their inspired revelations to New Testament developments and expectations.
- BIB3128** **Genesis:** Genesis tells of the beginning of creation, human brokenness, God's work of restoration and God choosing people. This course teaches on the reliability of Genesis and exposes students to storytelling and narrative methods of preaching.
- BIB3129** **Romans:** Paul's letter to the Romans is the longest of all his epistles and the most systematic and theologically crafted presentation of the gospel. No wonder it has also been characterized as the king of Paul's Letters and the manifesto of his gospel. The argument of Romans develops five major doctrines: condemnation, justification, sanctification, election, and consecration.



## COURSE DESCRIPTIONS

- BIB4123** **Ephesians:** Ephesians is widely celebrated as the queen of Paul's epistles. It is especially relevant for Christ-followers in Africa because it deals at length with two topics of immense importance in Africa: the power of the gospel to unite people who are natural enemies and the power of the gospel to grant the believer victory and authority over evil powers in Christ.
- BIB4124** **Old Testament Studies:** Upon completion of this course, you will have a good introductory grasp on the Old Testament as a research field with regards to content, canonicity, history, hermeneutics, literature, and theology.
- BIB4129** **New Testament Studies:** This course introduces you to the environment of early Christianity, the cultural and social world of the early Church, the literature of the New Testament, critical issues of New Testament formation, and the theological message of the New Testament. You will gain a framework for further study of individual New Testament books and for appreciating the significance of these ancient, inspired writings for the life of the Church.
- NTS5122** **The Pastoral Epistles and Pastoral Ministry:** This course will offer you an introduction to the historical, cultural, and literary contexts of Paul's pastoral letters, namely, 1 and 2 Timothy and Titus. You will develop skills in exegesis by exegeting passages from these pastoral letters. You will also be able to address some of the leadership-related concerns facing your local church context.
- NTS5124** **Acts: The Missional Church:** This course will expose you to a highly effective approach to missiology, known as the Praxis Matrix. This is not only an effective approach to mission praxis, but it also serves well as a model of missiological research. You will study selections from Acts with the aid of the Praxis Matrix.
- OTS5121** **Deuteronomy and Biblical Ethics:** This course introduces you to the book of Deuteronomy by exploring models for the interpretation and reading the book as narrative. The history and present applications of Deuteronomy will offer a firm grounding in Biblical ethics as well. You will also acquire exegetical skills to exegete and study selected passages of the book.
- OTS5122** **Nehemiah and Christian Leadership:** Many books have been written on Christian leadership, and many of them should be commended for their insight and wisdom. Our desire is not to repeat all those useful leadership principles in this course. We would rather look at the book of Nehemiah and focus on some of the prominent leadership qualities he displayed.



## COURSE DESCRIPTIONS

**OTS5123 Preaching and Teaching the Psalms:** The Psalms have been the most loved and inspiring portion of the Old Testament for believers. Their power to give voice to our deepest emotions, ranging from exuberant praise to desperate lament, makes them a powerful force for shaping the lives of God's people. The course focuses on interpreting the psalms for the purposes of preaching and teaching them.

### CHURCH AND SOCIETY

**CHS5121 Islamic Worldview and Religion:** In this course, you will gain foundational knowledge of the origin, history, writings, doctrine, and structure of Islam, and learn who Muhammad, the founder of Islam, was in comparison to Jesus Christ. You will also learn about the missional objectives and strategies of Islam compared with those of Christianity, as well as exploring missional methods of presenting the gospel of Jesus Christ to Muslims.

**CHS5122 African Worldview and Religion:** In this course, you will learn about various aspects of African Traditional Religion (ATR), namely, (1) Cosmology in ATR, (2) the philosophical, ethical and psychological principles in ATR, (3) the Supreme Being, divinities and spirits in ATR, (4) religious experience: rites, power and communication with spirits in ATR, and how Christianity ought to interact with such features of ATR.

**CHS5123 Understanding the Times:** This course examines the prominent worldviews and philosophies of our time, exploring ideas and their social implications. This is not primarily a course about a biblical worldview. The primary objective of the course is to empower Christian leaders to understand the world in which they live and minister by examining major ideological or philosophical trends, such as pluralism, postmodernism, secularism, globalization, feminism, and so on.

**CHS5124 Understanding the Margins:** The objective of this course is to help students to understand the marginalised members of society, addressing groups such as (a) women, (b) children, (c) the poor, and (d) foreigners, exploring social issues such as (a) racism, (b) sexism, (c) diaspora, and (d) poverty.

### COUNSELLING

**CCC1121 Human Development and Christian Counselling:** This course is designed to help the caregiver (pastor, lay-counsellor, and professional counsellor) understand the biophysical, intellectual, social, psychological, and spiritual changes that people undergo throughout their life span: from conception until death.



## COURSE DESCRIPTIONS

- CCC1123 Introduction to Crisis and Trauma Counselling:** This introductory course is designed to provide the caregiver (lay-counsellor) with a bio-psycho-social-spiritual understanding of crisis and trauma and the practical skills to come alongside those experiencing a crisis and/or trauma. Attention will also be given to suicide assessment and HIV/AIDS caregiving.
- CCC1124 Introduction to Domestic Violence and Abuse:** This course explores, from an integrated theology and psychology perspective, domestic and sexual violence, and physical and psychological-spiritual abuse. It introduces the lay counsellor to the theory and praxis of trauma counselling from bio-psycho-social-spiritual awareness and equips counsellors to come alongside survivors of domestic violence and abuse.
- CCC1125 Introduction to Wellness Counselling:** This course focuses on a wellness approach to Christian caregiving for lay counsellors. It explores spirituality from a biblical integrative bio-psycho-social-spiritual understanding. It equips lay counsellors to come alongside individuals with a prevention and optimally functioning approach - helping them grow to peak personal and spiritual wellbeing.
- CCC1126 Introduction to Addictions Counselling:** This course provides lay counsellors with an overview of the addictive process, the latest theories of addiction counselling, the etiology of addiction, and the substance-related and addictive disorders. From an integrative bio-psycho-social-spiritual perspective, lay counsellors will be equipped to come alongside and support individuals struggling with addiction.
- CCC1127 Excellence in Christian Counselling – Ethical and Legal Issues:** This course will equip lay and professional counsellors with an understanding of professional ethics, training and practice standards, educational requirements, and mental health law. Attention will be given to contemporary professional and psycho-social issues that affect the training and practice of Christian counsellors.
- CCC1128 Theoretical Foundations of Christian Counselling:** This course explores the theoretical foundations of counselling. The major counselling-psychology theories, and the main models of Christian counselling will be reviewed from an integrative theological and psychological perspective. A transtheoretical eclectic and integrative model that is Christ-centered, biblically-based, Spirit-led, and psychologically sound, is suggested.



## COURSE DESCRIPTIONS

- CCC1129 Biblical Basis and Introduction to Christian Counselling:** This course explores the concepts of lay, pastoral, and professional Christian counselling and provides a practical introduction to the foundations of a biblically based approach. Topics covered: Defining Christian counselling, the call to the counselling ministry, characteristics of Christian counsellors, the integration of theology and psychology, and an introduction to the Paraklesis model.
- CCC2121 Psychopathology and Spiritual Conflicts:** This course provides the counsellor with a bio-psycho-social-spiritual understanding of abnormal behaviour. Introducing the theory and theology of spiritual conflicts and providing an understanding of the different mental disorders. Christian counsellors will acquire the skills to differentiate, make provisional assessments, and make appropriate referrals.
- CCC2122 Relationships, Marriage and Family Christian Counselling:** This course provides the counsellor with a bio-psycho-social-spiritual understanding of singleness, dating and the choosing of a marriage partner, the marital relationships, family relationships, and relationship breakdown. It provides the theory and theology of couples, marriage and family counselling, and provides an understanding of pre-marital, couples, marriage, family, and divorce counselling.
- CCC2123 Introduction to Community Care and Counselling:** This course provides the counsellor with an integrative understanding of community care and counselling within the context of the church. The theory and practice of congregational care and community counselling is presented with the goal of making congregations a community where healing can take place and the congregation fulfill their responsibility of service in the local community.
- CCC2124 Introduction to Ageing, Death, Dying and Bereavement:** This course provides counsellors an integrative understanding of ageing, terminal illness, death, dying and bereavement. It introduces the basic theory of ageing and practice of the care of aging individuals and the terminally ill. Enabling lay counsellors to provide counselling for seniors and those dealing with the losses in life in the local church and/or a community.
- CCC2127 Introduction to Medicine, Health, and Healing:** This course explores the history of healing in the church, and the church's relationship to medicine and health. It explores the theological and psycho-spiritual implications of the use of psychotropic medications and provides lay counsellors with sufficient psychopharmacological knowledge to be able to provide compassionate supportive care to those who are receiving mental health care from professionals.





## COURSE DESCRIPTIONS

- CCC2128 Child and Adolescent Christian Counselling:** This course provides counsellors with an overview of Child and Adolescent Counselling Psychotherapy. It enables lay and professional counsellors to make assessments and provide treatment of children and adolescents within the limits of their training. Christian counsellors are equipped with effective, evidence based, clinical interventions for children and adolescents.
- CCC2129 Counselling Skills – Practicum One:** Counselling practicums guides student-counsellors through all the phases of care giving and equips them with the necessary counselling micro and therapeutic skills. Using micro skills to establish an effective helping relationship, counsellors can facilitate the client’s personal and spiritual growth and development, change or progress towards wholeness in Christ.
- CCC3120 People in Crisis – Pastoral Care and Counselling:** This course provides the counsellor with a bio-psycho-social-spiritual understanding of people in crisis. Attention is given to the psychological theory and theology of crisis and trauma counselling. Attention will be given to HIV/AIDS counselling; self-harm and suicide interventions and counselling; domestic violence and abuse counselling; conflict resolution and forgiveness and resilience.
- CCC3121 Gerontology – Pastoral Care and Counselling:** This course provides the counsellor with an integrative theological and psychological understanding of Gerontology. The psychological theory and practice of counselling ageing individuals and the terminally ill, is explored. Attention will be given to the ethical considerations in counselling ageing individuals, societal attitudes, ageism, care facilities, and end of life issues. Special attention is given to end of life issues, death and dying, grief, and the grieving process.
- CCC3122 The Church in Community – Pastoral Care and Counselling:** This course provides the counsellor with an understanding of congregational care and community counselling. It explores the theological concept of “church” (ekklesia) and the theological and psychological understanding of community. Using group dynamics, care-groups in church, parachurch, and community settings, professional pastoral counsellors can foster the psycho-social-spiritual nurturing of community members.
- CCC3123 Substance Abuse – Pastoral Care and Counselling:** This course provides the counsellor with an understanding of substance abuse and addictions counselling. Substance-Related and Addictive Disorders, comorbid mental disorders, and the sociocultural, political, and phenomenological aspects of addiction, are explored. Counsellors will develop a conceptual knowledge and self-awareness of the etiology and treatment of addictions.





## COURSE DESCRIPTIONS

- CCC4121 **Ethics in Christian Counselling:** This course aims to afford students the opportunity to engage with and commit to ethical standards of Christian counselling excellence.
- CCC4241 **Narrative Counselling as Pastoral Care:** This course is designed to introduce the theoretical foundations and practical skills of narrative pastoral care and counselling to students.
- CCC4242 **Narrative Counselling and the Church:** This course aims to provide students with theoretical and practical skills in narrative counselling within the context of the church and community.

### MISSIOLOGY

- MIS2122 **Contemporary Issues in Missions:** This course is a study of the issues that are critical in missions today and will help the student to develop a passion for missions in the 21st century.
- MIS2123: **The Historical Perspective on Missions:** This course is a study on the history of missions, briefly discussing the expansion of Christianity throughout the last 2000 years.
- MIS2124 **The Mission of God:** This course is a study of the central mission of God evaluating His interaction with humanity through missions in a global context.
- MIS3121 **World Religions:** This course provides an introductory level overview of the five major world religions, namely, African Traditional Religions, Islam, Judaism, Hinduism, and Buddhism.
- MIS3124 **Church Growth:** This course examines the basis for current church growth theory and practice and compares them with Biblical principles.
- MIS3125 **Islam:** The objective of this course is to equip and empower Christians and Church leaders to understand Islam and to engage Muslims in ways that are faithful to Christ's values and mission.
- MIS4121 **Mission as Engagement:** This course will give you an introduction to missiology that is not limited to the "biblical foundation of mission" or to a pragmatic "how to" approach of "doing mission," but which combines these (and other) key dimensions of missiology in an integrated perspective. It also combines the dimensions of spirituality and practical planning.





## COURSE DESCRIPTIONS

- MIS4122 Understanding Islam:** This course examines a general overview of Islam; the life of Muhammad; Allah of the Qur'an with the God of the Bible; the mission of Islam (Islamisation); and current approaches to present the gospel to Muslims (Witness).
- MIS4123 Critiquing Islam:** The student will select one controversial topic (Origins; Muhammad; Allah; Islamisation; Evangelisation) to research. You will need to delimit the topic, read as much as you can about it, and then write a well-argued research paper.

### PRACTICAL THEOLOGY

- MIN5121 Ministry Practicum 1:** This is the practical component of one of the Practical Theology electives in the MDiv programme. It is designed to run parallel to the latter and to facilitate practical application of, as well as theoretical reflection on its contents. The practical ministry is done under qualified supervision that includes formal and informal assessment.
- MIN5122 Ministry Practicum 2:** This the final course of the MDiv programme and is designed to help you integrate the various parts of the course into a practical ministry plan. This plan should be framed within one of the Practical Theology options you have selected and will be a continuation of work done in Ministry Practicum 1.
- PRA1121 Christian Relationships:** This course provides an introduction to the primacy of our relationship with God through different modes and principles of worship and prayer. It will also aim to inform a biblical approach to nurture your family spiritually.
- PRA1122 Introduction to Youth Ministry:** Youth ministry plays an integral part of Pastoral Ministry in the Church. In this course, you will learn about youth and their phases of development, the role of the church in the youth's development and the context of youth and how to adapt the ministry accordingly.
- PRA1124 Biblical Leadership:** Inspired by the example of Jesus, Biblical leadership explores key New Testament leadership models, principles, practices, and requirements with a view toward personal growth and transformational leadership development.
- PRA2121 Christian Counselling 1:** This course introduces the student to the field of pastoral care, including its basis, goals, terminology, concepts, and techniques.







## COURSE DESCRIPTIONS

- PRA2122 Pastoral Ministry:** This course prepares the student with the pastoral responsibilities of preaching, teaching, leading, equipping, administrating, and many other tasks in the context of the local Church.
- PRA2123 Homiletics:** This course prepares the preacher for the construction and delivery of the sermon.
- PRA2124 Children at Risk:** This course will help you to better understand what it would look like for children-at-risk to be meaningfully incorporated in the mission of the Church, something which a large part of the Church has either ignored or underemphasised for 2000 years. It will urge you to help correct those failings by responding appropriately in your ministry.
- PRA3121 Conflict and Reconciliation:** This course is an in-depth study of "The Peacemaker: A Biblical Guide to Resolving Personal Conflict," bringing the Biblical principles of conflict management together in a practical way.
- PRA3124 Christian Counselling 2:** The general themes covered in this module are group and family counselling, singleness, premarital and marital counselling, including marriage enrichment, considerations concerning problematic marriages and divorce (Prerequisite for this course is PRA2121).
- PRA3125 Church Leadership:** This course examines many biblical, personal, and practical foundations for church leadership.
- PRA3126 Church Administration:** This course provides a closer look at Biblical principles for congregational management.
- PRA4122 Judges and Narrative Preaching:** This course will explore the history, theoretical underpinning, and primary models of narrative preaching. You will apply selected approaches to prepare and deliver sermons using narrative models, focusing on the book of Judges.
- PRA4121 Practical Theology:** This course serves as an introduction to practical theology as a theological discipline, a field of theological study and research. By the end of this course you will be able to: 1) articulate the biblical foundations of Practical Theology, 2) formulate an evangelical vision of Practical Theology.
- PTS5122 Expository Preaching:** This course will introduce you to the value and application of important disciplines like exegesis, hermeneutics, and homiletics. Once you have acquired some knowledge and skill for expository preaching, you will have an opportunity to acquire practical experience.



## COURSE DESCRIPTIONS

- PTS5123 Marketplace Ministry:** Work and family are the two domains of life that are most important to most people. Church leaders must have a well-developed theology of work so that they can help their people view work as a means of serving God faithfully.
- PTS5124 Discipleship:** Effective discipleship of Christian believers is often neglected by churches. This course encourages the student to foster a culture of discipleship in their own ministry context.

### SYSTEMATIC THEOLOGY

- THE1120 Introduction to Theology:** This is the foundational course for all undergraduate students. In this course, you will be introduced to SATS and our core values, common themes, and core definitions of Theology, as well as navigating the online SATS platform.
- THE1121 Christian Foundations:** This course covers both the fundamental beliefs and spiritual practices of the Christian faith. Significant themes include repentance, faith towards God, how to study the Bible, water baptism, the Lord's Supper, prayer, authentic worship, and many more.
- THE1122 Biblical Worldview:** The worldviews course answers the major philosophical and practical questions of life from a biblical perspective. The course defines, explains, and examines the consequences of a worldview.
- THE1123 The Holy Spirit: What the Bible Teaches:** Correctly understanding the Bible's teaching about the person and work of the Holy Spirit is an integral part of Christian formation. The entire Christian walk is dependent upon the presence and power of God's Spirit with, in, and upon us. A proper understanding of the Holy Spirit is crucial for a healthy relationship with God and an active ministry in the Church and the world.
- THE1124 Survey of Church History:** Traverse the history of the church from its beginning up to the development of evangelicalism. You will survey the whole period of church history multiple times, starting with short overviews and progressing to increasingly more detailed surveys until the whole period is familiar to you—a solid foundation for further theological studies.
- THE2121 The Doctrine of the Church:** Examines the nature, purpose, organisation, and ordinances of the Church. It also surveys the important aspects of church life, together with exploring various other views of the Church and its structures.
- THE2122 The Doctrine of Man and Sin:** This subject explores man's relation to God and the cause and consequences of our sin.





## COURSE DESCRIPTIONS

- THE2123 The Doctrine of Salvation:** This course covers Jesus' humanity and deity, his death, resurrection, and glorification. It also deals with our conversion, justification, regeneration, sanctification, and perseverance.
- THE2124 The Doctrine of God:** This course approaches the Doctrine of God not only from a biblical perspective but also in the light of the situation that prevails in the 21st century.
- THE3121 The Doctrine of the Kingdom:** This course helps students to comprehend the nature of the Kingdom of God, discern Satan's actual present rights and status and survey the main categories of end-time doctrine.
- THE3122 The Doctrine of Revelation:** This course highlights the importance of understanding general and special revelation, including an appreciation of the various theories of inspiration, inerrancy, and authority of the Scriptures.
- THE3123 Apologetics:** This course provides a fairly detailed introduction to apologetics as a Christian discipline and the various models of presentation and context. The modern contexts of apologetics (Post-modernism and the New Atheism) are also carefully considered.
- THE3124 Christian Ethics:** This module deals with the moral implications of the gospel, introducing today's Christian worker to skills and tools that will help them engage postmodern society with clear Christian motives and persuasion.
- THE3126 African Theology:** This course shows how Africans have approached theology. The course introduces the student to African Traditional Religion and the role it and Western theology have played in the development of African theology.
- THE4241 Systematic Theology:** This course provides an orientation to the field of Systematic Theology. It includes an overview of major doctrines of the Christian faith (Unit 1), research methods (Unit 2), and a research paper (Unit 3).
- THE4123 Children, Bible and Theology:** In this course, you will develop a solid understanding of the relationship between children, Bible, and theology in theological thought and research. You will be introduced to key concepts, issues, trends and leading scholars in theological engagement with children and childhood.
- THE5121 The Kingdom in Church and Mission:** This course focuses on the kingdom of God and its relation to church and mission and explores how they relate to one another. The course offers you an opportunity to explore the biblical motif of the kingdom of God in a way that is relevant to practical ministry application.



## COURSE DESCRIPTIONS

- THE5122 Sin and Salvation in Cultural Context:** This course will help you to appreciate the significance of cultural contexts and to explore ways in which the Christian doctrines of sin and salvation may be received and understood by those from such contexts— whilst remaining faithful to Scripture. The course provides a theological grounding of sin and salvation that is both biblical and transferable to different cultural contexts.
- THE5123 The Holy Spirit: A Global Perspective:** This course will ground you in a biblical account of the Holy Spirit with a focus on Jesus' teaching. You will then explore the doctrine of the Holy Spirit in historical theology. At this point, you would have a strong foundation to examine the Holy Spirit from a global perspective, namely, Pentecostalisation and the Holy Spirit in African indigenous churches.

### BIBLICAL LANGUAGES

- BGK1121 Biblical Greek 1A:** Greek 1A is the first step in a four-step journey towards reading, translating, analysing and interpreting the Greek New Testament.
- BGK1122 Biblical Greek 1B:** Greek 1B is the second step in the four-step journey towards learning to read, translate, analyse and interpret the Greek New Testament. This course builds on the foundation laid in Greek 1A.
- BGK2121 Biblical Greek 2A:** Greek 2A is the third step on the journey towards reading, translating, analysing and interpreting the Greek New Testament. This course builds on the foundation laid in Greek 1A and 1B.
- BGK2122 Biblical Greek 2B:** Greek 2B is the fourth and final step on the journey towards reading, translating, analysing and interpreting the Greek New Testament. We have spent three courses laying the foundations. All the foundations are laid, and now we are going to put all the pieces together.
- BHB1121 Biblical Hebrew 1A:** The Biblical Hebrew course is the first of two modules covering the basics of Biblical Hebrew grammar.
- BHB1122 Biblical Hebrew 1B:** The Biblical Hebrew course is the second of two modules covering the basics of Biblical Hebrew grammar.



# COURSE DESCRIPTIONS

## ORIENTATION, RESEARCH AND OTHER COURSES

- GEN4121 Theological Orientation:** This course lays a foundation for postgraduate studies at SATS and exposes the student to the following aspect: The history of SATS, Theological research and writing skills, e-learning, research tools, theological sub-disciplines, and research models, levels of postgraduate studies and their implications for life and ministry.
- GEN4122 Directed Theological Reading:** This elective course exposes you to current scholarship in a specific field of theological studies or a combination of theological fields. You will be given a list of resources to read, analyze, interpret, compare, and apply. Assessment is done through an online oral examination where you will demonstrate your knowledge of the prescribed reading material.
- RES4122 Research Methodology:** This course is designed to sharpen your understanding of theological research methodology. It is a prerequisite for the following course: RES4241.
- RES4241 Research Project:** This is an elective course in the B.Th. Honours programme in which you apply a specific research method in your research on one of the prescribed research topics. The course culminates in a research report of around 7 000 words that include references to at least 15 scholarly works.
- RES5600 Structured Master's Thesis:** This course will introduce you to the discipline of theological research, setting you on the exciting journey towards writing a theological thesis based on your theological interest. The course will help you choose a research topic, taking it through the various phases to the final thesis.
- MRS5240 Research Concept Development:** This is the first compulsory course in the MTh programme. It introduces you to advanced theological studies and the most important research methodologies. It guides you through a process of developing a research concept that will form the basis of your research project.





## TIMETABLE

The Seminary's academic year runs from 1 February to 31 January. The year is divided into four three-month terms.

Timetables for each programme can be found on the SATS website ([sats.ac.za](http://sats.ac.za)).

Term 1	Term 2	Term 3	Term 4
1 Feb to 30 Apr	1 May to 31 Jul	1 Aug to 31 Oct	1 Nov to 31 Jan

*Table 1: Four Terms*

The majority of undergraduate courses in the Higher Certificate in Christian Life (HCCL), Higher Certificate in Christian Counselling (HCCC) and the Bachelor of Theology (BTh) programmes run over a three-month term. Most courses are offered twice each year, either in Term 1 and 3 or in Term 2 and 4.

You should select at least one course from each timeslot—that is, one each from Term 1, 2, 3 and 4 for the academic year. You are required to complete at least four courses each year.

### Language Courses

There are 4 Greek and Hebrew language courses. Each course is run online over a 6-month period.

To reap the full benefits of the Biblical Languages courses, you will need to take all four Greek or Hebrew courses.





## CONTACT DETAILS

<b>Postal</b>	South African Theological Seminary PO Box 98988, Sloane Park, 2152 South Africa
<b>Physical</b>	37 Grosvenor Road Bryanston, 2191 South Africa
<b>GPS Coordinates</b>	S 26,052194° E 28,006309°
<b>Telephone</b>	+27 11 234 4440
<b>E-mail</b>	info@sats.edu.za
<b>Website</b>	www.sats.edu.za

---

## BANKING DETAILS

<b>Name of Bank</b>	First National
<b>Branch</b>	Fourways Mall
<b>Branch Number</b>	251655
<b>Name of Account</b>	SA Theological Seminary
<b>Account #</b>	51321182366
<b>Swift</b>	FIRNZAJJ

To make payment online, simply click on *Pay Online* on the homepage <https://www.sats.edu.za>



